

If you need help accessing this document, please contact us at [msfc-ssfl-information@mail.nasa.gov](mailto:msfc-ssfl-information@mail.nasa.gov).

**Appendix 2F**  
**Environmental Justice Screening Report**

---

**This page intentionally left blank.**

Save as PDF

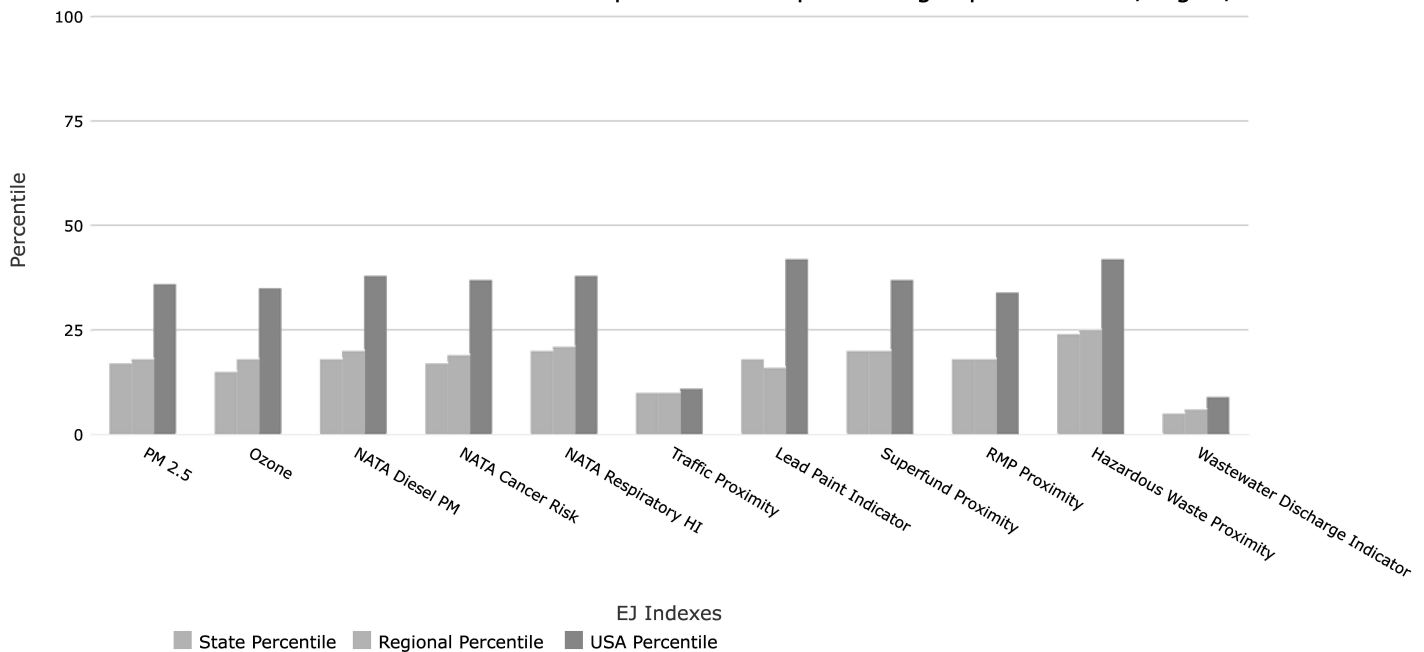


**EJSCREEN Report (Version 2017)**  
**5 mile Ring Centered at 34.247703,-118.699684**  
**CALIFORNIA, EPA Region 9**  
**Approximate Population: 139,947**  
**Input Area (sq. miles): 78.53**

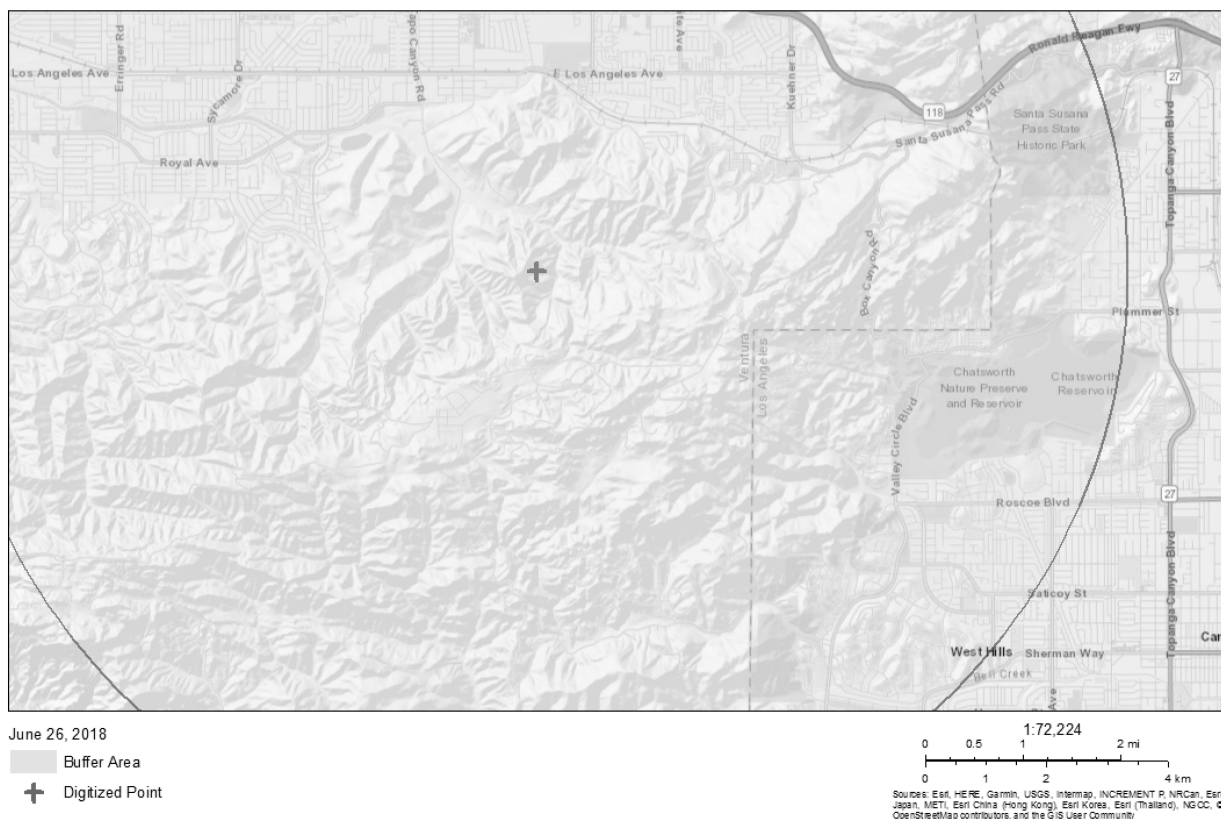


Selected Variables	Percentile in State	Percentile in EPA Region	Percentile in USA
<b>EJ Indexes</b>			
EJ Index for Particulate Matter (PM 2.5)	17	18	36
EJ Index for Ozone	15	18	35
EJ Index for NATA* Diesel PM	18	20	38
EJ Index for NATA* Air Toxics Cancer Risk	17	19	37
EJ Index for NATA* Respiratory Hazard Index	20	21	38
EJ Index for Traffic Proximity and Volume	10	10	11
EJ Index for Lead Paint Indicator	18	16	42
EJ Index for Superfund Proximity	20	20	37
EJ Index for RMP Proximity	18	18	34
EJ Index for Hazardous Waste Proximity	24	25	42
EJ Index for Wastewater Discharge Indicator	5	6	9

EJ Index for the Selected Area Compared to All People's Blockgroups in the State/Region/US



This report shows the values for environmental and demographic indicators and EJSCREEN indexes. It shows environmental and demographic raw data (e.g., the estimated concentration of ozone in the air), and also shows what percentile each raw data value represents. These percentiles provide perspective on how the selected block group or buffer area compares to the entire state, EPA region, or nation. For example, if a given location is at the 95th percentile nationwide, this means that only 5 percent of the US population has a higher block group value than the average person in the location being analyzed. The years for which the data are available, and the methods used, vary across these indicators. Important caveats and uncertainties apply to this screening-level information, so it is essential to understand the limitations on appropriate interpretations and applications of these indicators. Please see EJSCREEN documentation for discussion of these issues before using reports.



### Sites reporting to EPA

Superfund NPL	0
Hazardous Waste Treatment, Storage, and Disposal Facilities (TSDF)	0

Selected Variables	Value	State Average	Percentile in State	EPA Region Average	Percentile in EPA Region	USA Average	Percentile in USA
<b>Environmental Indicators</b>							
Particulate Matter (PM 2.5 in $\mu\text{g}/\text{m}^3$ )	9.66	10.6	26	9.9	41	9.14	60
Ozone (ppb)	44.7	40.8	75	41.8	64	38.4	91
NATA* Diesel PM ( $\mu\text{g}/\text{m}^3$ )	0.502	0.973	25	0.978	<50th	0.938	<50th
NATA* Air Toxics Cancer Risk (risk per MM)	38	44	30	43	<50th	40	<50th
NATA* Respiratory Hazard Index	1.3	2.1	18	2	<50th	1.8	<50th
Traffic Proximity and Volume (daily traffic count/distance to road)	710	1200	63	1100	66	590	83
Lead Paint Indicator (% pre-1960s housing)	0.093	0.29	36	0.24	44	0.29	35
Superfund Proximity (site count/km distance)	0.044	0.17	26	0.15	31	0.13	38
RMP Proximity (facility count/km distance)	0.28	1.1	33	0.98	39	0.73	48
Hazardous Waste Proximity (facility count/km distance)	0.022	0.13	15	0.12	18	0.093	24
Wastewater Discharge Indicator (toxicity-weighted concentration/m distance)	0.025	16	79	13	79	30	85
<b>Demographic Indicators</b>							
Demographic Index	29%	49%	22	47%	24	36%	47
Minority Population	39%	61%	25	59%	29	38%	59
Low Income Population	19%	36%	27	36%	27	34%	27
Linguistically Isolated Population	4%	10%	33	9%	39	5%	66
Population with Less Than High School Education	9%	18%	37	17%	39	13%	45
Population under Age 5	5%	7%	40	7%	40	6%	43
Population over Age 64	13%	12%	64	13%	63	14%	54

\*The National-Scale Air Toxics Assessment (NATA) is EPA's ongoing, comprehensive evaluation of air toxics in the United States. EPA developed the NATA to prioritize air toxics, emission sources, and locations of interest for further study. It is important to remember that NATA provides broad estimates of health risks over geographic areas of the country, not definitive risks to specific individuals or locations. More information on the NATA analysis can be found at: <https://www.epa.gov/national-air-toxics-assessment>.

For additional information, see: [www.epa.gov/environmentaljustice](http://www.epa.gov/environmentaljustice)

EJSCREEN is a screening tool for pre-decisional use only. It can help identify areas that may warrant additional consideration, analysis, or outreach. It does not provide a basis for decision-making, but it may help identify potential areas of EJ concern. Users should keep in mind that screening tools are subject to substantial uncertainty in their demographic and environmental data, particularly when looking at small geographic areas. Important caveats and uncertainties apply to this screening-level information, so it is essential to understand the limitations on appropriate interpretations and applications of these indicators. Please see EJSCREEN documentation for discussion of these issues before using reports. This screening tool does not